



Sept. 2nd



Specials News

Mrs. Arnold, Coach Hinton, Coach Lev,
Ms. Lopez, Mrs. Rodriguez and Mrs. Vontz

Art

From Mrs. Vontz-

5th: Farm Animal- Draw from photograph using Shape and Proportion

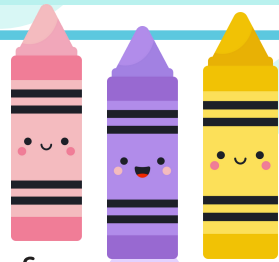
4th: Farm Animal- Contour Drawing

3rd: Kandinsky Concentric Circles- Paper Plate Weaving

2nd: Farm Scene- Optical Perspective

1st: Farm Animal- Shapes and Lines

PK/K: Intro. Lines- Line Exploration and Practice



Library

From Mrs. Arnold-

kinder- 5th: Makerspace Stations- all grade levels We're excited to use our Makerspace stations in the library! Throughout the class, your child will engage in a variety of activities that encourage critical thinking, creativity, and collaboration.

prek - will be listening to stories for enjoyment



MUSIC

From Mrs. Rodriguez-

2nd-5th Grade: Review rhythms and practicing our singing voices.

PREK-1st Grade: Practicing our singing voices and moving safely in the music room.

Cougar Choir: 4th and 5th graders if you are interested in choir please grab an information sheet from Mrs. Rodriguez OR go on the music school website to sign up.



MUSIC 2

From Ms. Lopez-

2nd-5th: Review rules and expectations of the music room. Review rhythms and dynamics.

K-1st: Review rules and expectations of the music room. Review steady beat and play rhythm sticks to demonstrate steady beat.

Pre-K: Review rules and expectations of the music room. Review steady beat.



PLC Focus

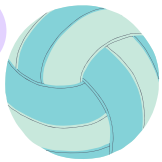
Health & Music Lessons



Specials News

LOOKIE HERE

P.E.

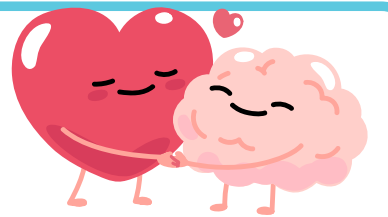


From Coach Lev-

3rd-5th will be working on gym procedures and moving in dynamic situations

K-2nd will be working on gym procedures and spatial awareness.

Health



Coach Hinton-

Students are learning how to build healthy relationships and practice positive ways to resolve conflict.

Club Information



Attention 4th & 5th Graders-

Mon 8

Art Club applications are due Sept. 25th at 10 a.m.

Choir applications are due by Sept. 3rd. Look at the choir website on the PGE page for the application and to sign up for an audition.



2025-2026 PGE SPECIALS ROTATIONS



| | | | | | | | | | | | | | | | | | | | | | | | | | | | | | | | |
|-----|-------|-------|-------|-------|-------|-------|-------|-------|-------|--------|--------|--------|--------|--------|--------|--------|--------|--------|--------|----------------------------|--------|--------|--------|--------|----------------------|--------|--------|--------|--------|--------|--------|
| AUG | Fri 1 | Sat 2 | Sun 3 | Mon 4 | Tue 5 | Wed 6 | Thu 7 | Fri 8 | Sat 9 | Sun 10 | Mon 11 | Tue 12 | Wed 13 | Thu 14 | Fri 15 | Sat 16 | Sun 17 | Mon 18 | Tue 19 | Wed 20 | Thu 21 | Fri 22 | Sat 23 | Sun 24 | Mon 25 | Tue 26 | Wed 27 | Thu 28 | Fri 29 | Sat 30 | Sun 31 |
| | | | | | | | | | | | | Gym | Gym | | | | | | | | | | | | | | | | | | |
| SEP | Mon 1 | Tue 2 | Wed 3 | Thu 4 | Fri 5 | Sat 6 | Sun 7 | Mon 8 | Tue 9 | Wed 10 | Thu 11 | Fri 12 | Sat 13 | Sun 14 | Mon 15 | Tue 16 | Wed 17 | Thu 18 | Fri 19 | Sat 20 | Sun 21 | Mon 22 | Tue 23 | Wed 24 | Thu 25 | Fri 26 | Sat 27 | Sun 28 | Mon 29 | Tue 30 | |
| | | | | | | | | | | | | | | | | | | | | | | | | | 30 min Early Release | | | | | | |
| OCT | Wed 1 | Thu 2 | Fri 3 | Sat 4 | Sun 5 | Mon 6 | Tue 7 | Wed 8 | Thu 9 | Fri 10 | Sat 11 | Sun 12 | Mon 13 | Tue 14 | Wed 15 | Thu 16 | Fri 17 | Sat 18 | Sun 19 | Mon 20 | Tue 21 | Wed 22 | Thu 23 | Fri 24 | Sat 25 | Sun 26 | Mon 27 | Tue 28 | Wed 29 | Thu 30 | Fri 31 |
| | | | | | | | | | | | | | | | | | | | | | | | | | | | | | | | |
| NOV | Sat 1 | Sun 2 | Mon 3 | Tue 4 | Wed 5 | Thu 6 | Fri 7 | Sat 8 | Sun 9 | Mon 10 | Tue 11 | Wed 12 | Thu 13 | Fri 14 | Sat 15 | Sun 16 | Mon 17 | Tue 18 | Wed 19 | Thu 20 | Fri 21 | Sat 22 | Sun 23 | Mon 24 | Tue 25 | Wed 26 | Thu 27 | Fri 28 | Sat 29 | Sun 30 | |
| | | | | | | | | | | | | | | | | | | | | | | | | | | | | | | | |
| DEC | Mon 1 | Tue 2 | Wed 3 | Thu 4 | Fri 5 | Sat 6 | Sun 7 | Mon 8 | Tue 9 | Wed 10 | Thu 11 | Fri 12 | Sat 13 | Sun 14 | Mon 15 | Tue 16 | Wed 17 | Thu 18 | Fri 19 | Sat 20 | Sun 21 | Mon 22 | Tue 23 | Wed 24 | Thu 25 | Fri 26 | Sat 27 | Sun 28 | Mon 29 | Tue 30 | Wed 31 |
| | | | | | | | | | | | | | | | | | | | | No Specials Holiday Events | | | | | | | | | | | |

Please check with your child’s teacher to see what Specials class they go to on each colored day.